

# KITCHENS BEDROOMS BATHROOMS

JANUARY 2012

## *London calling*

Inside the capital's most stunning homes

*Beautiful Belgravia pied-à-terre*  
*Morocco meets Muswell Hill*  
*Perfectly formed Hampstead living*

**NEW YEAR  
NEW HOME**

Easy ways to update  
your living space

**32-PAGE FOOD SPECIAL**

# LET'S EAT

SEASONAL EATING  
TOP CHEFS' RECIPES  
GIFTS FOR GOURMETS

£3.99



A chat with...



# Michael Yeung

Cars, motorcycles and aeroplanes – *KBB* discovers what makes Hong Kong-based designer Michael Yeung tick

Compiled by **Sophie Baylis**

## Tell us about your latest project?

"I am currently in the process of designing a new collection, half of which will be more extreme and the other half will be more toned down."

## What or who inspires you?

"I draw inspiration from the aviation and automation industries, from cars, motorcycles and aeroplanes, which I also think comes across in my pieces."

"For me, it's important to create furniture and forms that have never really been done before"

## How would you describe your signature style?

"My design concept is functional art. I always aim to design products that people have not seen before, creating something that is not only beautiful but also functional and comfortable. I want to create the unexpected – which may sometimes create a little discomfort – but always strive to produce designs that are functional and practical in usage at the same time."

## What is your prediction for the trends of the future?

"I don't really think about the future or the past per se – for me, it's important to create furniture and forms that have never really been done before, using materials and shapes that are surprising, unexpected and unusual."

[www.michael-yeung.com](http://www.michael-yeung.com)

## Take three... Contemporary chandeliers



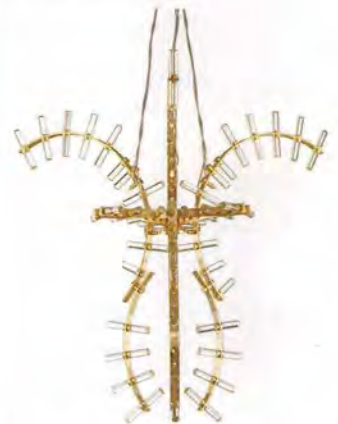
Lending a contemporary look to classic, hand-blown Murano glass, Luna by Villaverde is an understated design created around one central piece with relatively few components, giving it a clean look. Priced £3495.

**020 7610 9797 or  
[www.villaverdeltd.com](http://www.villaverdeltd.com)**



Who says that a chandelier has to be dated? Matali Crasset has thrown the rulebook out of the window with Rhizome for Arturo Alvarez, produced in steel and priced £815 from La Conch Lighting.

**020 8601 7138 or  
[www.laconch.co.uk](http://www.laconch.co.uk)**



There are chandeliers and then there is Branco by Barocelli in satin galvanised gold with cristallo rods, priced £4090. Simply stunning.

**020 7720 6556 or  
[www.barocellidesign.com](http://www.barocellidesign.com)**



No need to guess where Next got its inspiration for the white faux leather Blake chair. Its price is £399.  
**0844 844 8000 or [www.next.co.uk](http://www.next.co.uk)**

*Steal Style*



Arne Jacobsen's iconic Egg chair needs little introduction. Be bold and buy it in red from Utility from £3620.  
**0151 708 4192 or [www.utilitydesign.co.uk](http://www.utilitydesign.co.uk)**