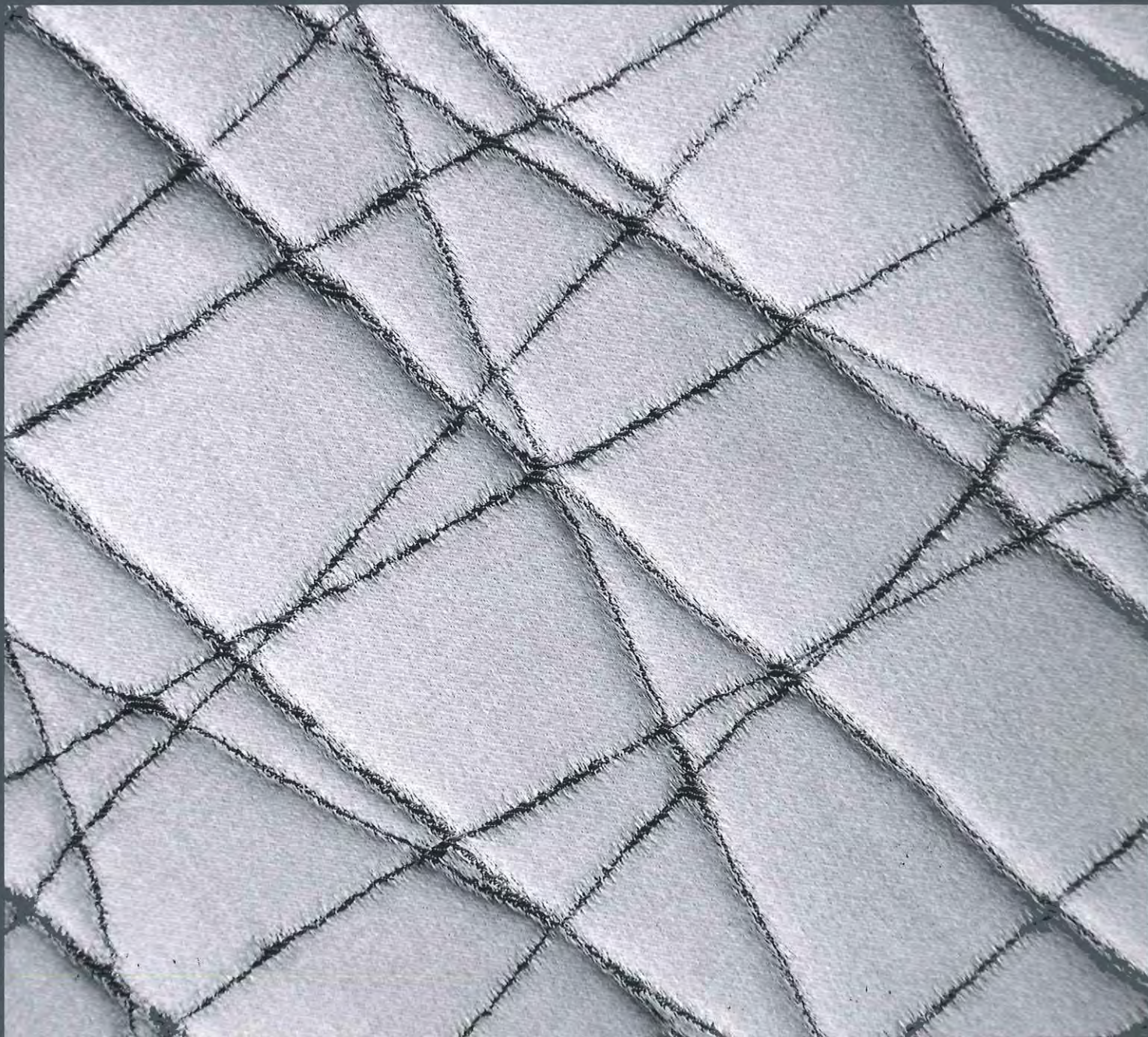


# Superyacht

INTERIOR DESIGN

EXTERIOR SPACE

CREATIVITY AND ARCHITECTURE



# DESIGN

# MOOD BOARD

LIGHTING



## Snowflake Baroncelli

As a company that has for decades specialised in handcrafted design made in Murano, we are always looking at ways to infuse Venetian glass with a contemporary aesthetic and move the craft forward. The Snowflake chandelier is based on a seemingly simple, everyday form found in nature, but once you look more closely it becomes an object of both incredible beauty and geometric complexity. This was the point of inspiration for this statement piece of lighting, which measures over a metre in diameter and comprises of almost a hundred individually blown glass rods. The task of arranging the components and creating the effect we wanted was exactly the kind of technical challenge the studio loves to take on. The result is a striking centrepiece for any room, which also creates an ethereal prismatic glow when lit.

# INSPIRATIONAL ILLUMINATION

While artistic inspiration might be more evident in the realm of soft furnishings and fabrics, in this issue's Mood Board we discover that inspiration for lighting fixtures can be just as varied and unique as for textiles. Whether the design is rooted in practicality and technology or is a sculptural piece that merges art and functionality, lighting design is both complex and creative. Lighting can ultimately control the identity and feel of a space, creating subtle moods and ambience. From chandelier centrepieces to wall sconces, LED technology to innovative materials, lighting design requires a combination of technical and artistic inspiration and has never been more dynamic. Eight designers from across the spectrum of lighting design tell SYD about their latest products and explain how each piece evolved.



*Geometric complexity*

