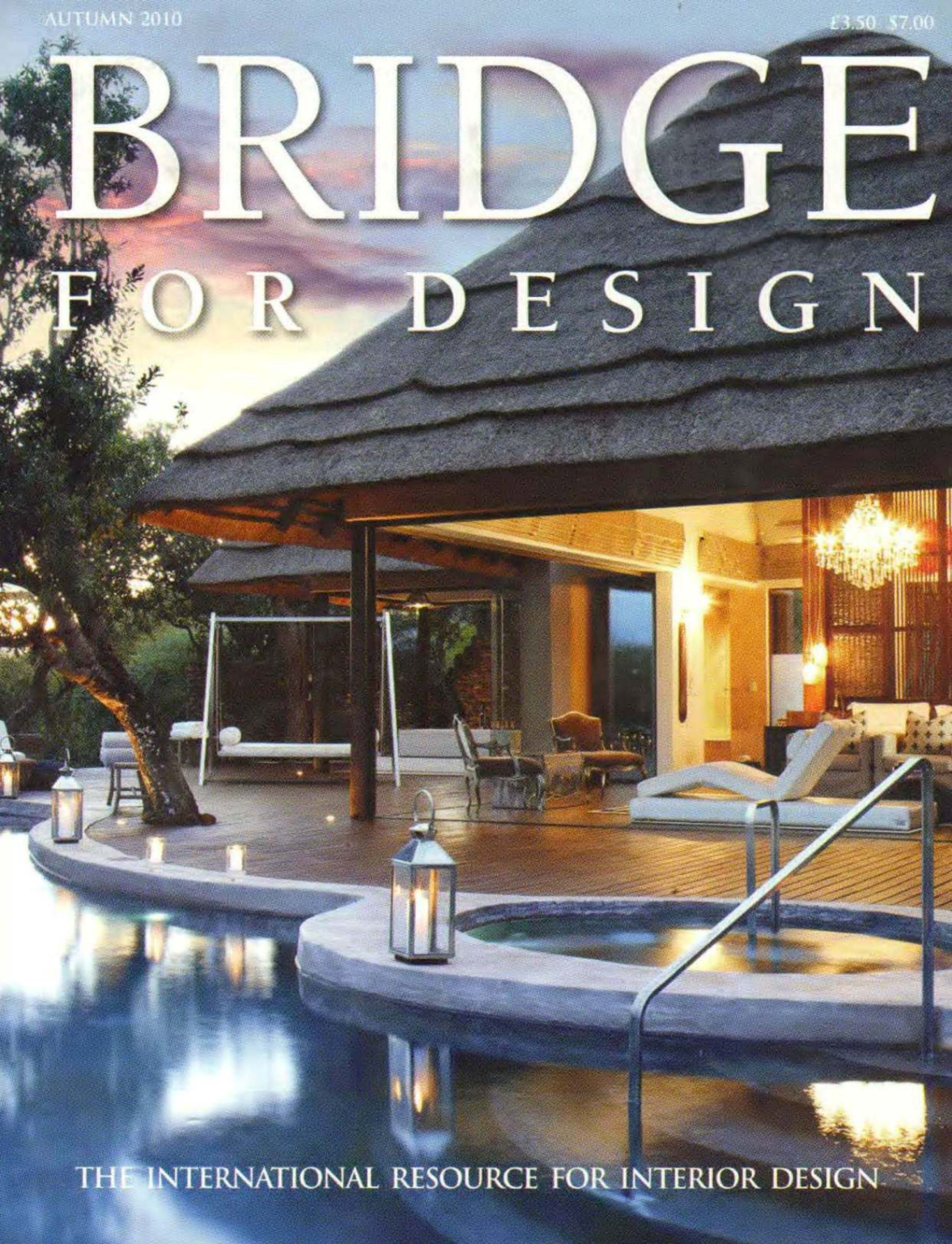


AUTUMN 2010

£3.50 \$7.00

BRIDGE

FOR DESIGN

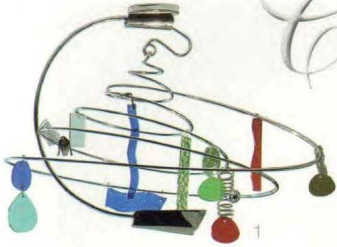


THE INTERNATIONAL RESOURCE FOR INTERIOR DESIGN

THIS SEASON'S...

Chandeliers

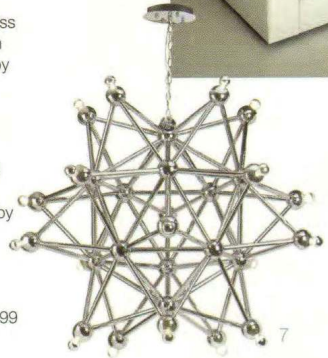
Ceiling lights with a twist



1. Melissa chandelier with coloured cathedral glass and prism multi-faceted crystals suspended from spiralled polished chromed steel. £775 (\$1150) by Artemide from Mac&Mac Interiors.
Tel.: +44 (0)1252 717 771
www.macandmacinteriors.com



2. Bulles Lampadario with white or black painted glass support and clear, ribbed or bell shaped suspended glass spheres. From £1775 (\$2650) by Reflex at Anna Casa Interiors.
Tel.: +44 (0)20 7352 8353
www.annacasa.net



3. Samirah chrome ribbon pendant chandelier, £799 (\$1200) from The Chandelier & Mirror Company.
Tel.: +44 (0)1322 437 112
www.chandeliersandmirrors.co.uk

4. Roast hand crafted sculptural chandelier made from individually blown glass spheres, £3650 (\$5475) from mydeco boutique.
www.mydeco.com



5. Petal chandelier in white satin Murano glass, from the Retro Murano Collection, £1850 (\$2775) with chrome finishes from Bella Figura.
Tel.: +44 (0)20 7376 4564
www.bella-figura.com



6. Mercury Suspension Light with aluminium pebbles floating beneath a central disc, £1493 (\$2250) by Artemide from NGI Design.
Tel.: +44 (0)1780 766 899
www.ngidesign.co.uk

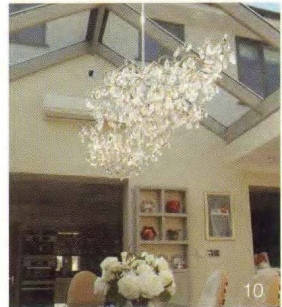


7. Brysen Lattice Structure Chandelier, £3385 (\$5075) from The Chandelier & Mirror Company Ltd
Tel.: +44 (0)1322 437 112
www.chandeliersandmirrors.co.uk



8. Niagara chandelier with ceramic fairies, from £11,000 (\$16,500) at Lladró,
Tel.: +44 (0)20 7494 0407
www.lladro.com

9. Egon hand crafted chandelier with rosso, acquamare, ambrà chiaro, nero and lattimo glass on a brushed brass frame, £9799.50 (\$14,700) from Mediterraneo.
Tel.: +44 (0)20 7720 6556
www.mediterraneodesign.com



10. Lozenge shaped lead crystal chandelier with hand shaped individually applied crystals suspended from twists of brushed stainless steel wire. Made to order by Sam Coles, P.O.A..
Tel.: +44 (0)7990 973 533/ +44 (0)1525 382 682
www.samcoleslighting.co.uk