

DIEGO CHANDELIER

INSTALLATION INSTRUCTIONS

1 OF 3

BARONCELLI ⌘



WHAT IS INCLUDED

1. Ceiling canopy
2. Chain
3. Spares
4. Bracket Bar (Junction box attachment)

WHAT YOU WILL NEED

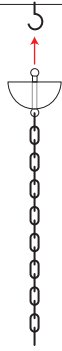
1. Hook / Junction box fixings
2. Bulbs - E14 (240v) / E12 (120v) - Max 60W
3. Screwdriver (3.5mm / 1/8" flat tip) + pliers
4. Soft cloth

DIEGO CHANDELIER

INSTALLATION INSTRUCTIONS

2 OF 3

BARONCELLI 



STEP 1

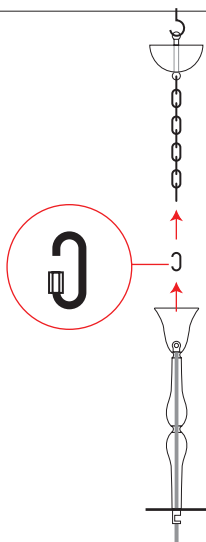
Using a heavy-duty hook secured firmly into a joist, hook the ceiling canopy and chain. Ensure hook is capable of taking a 20kg load.

NOTE: CEILING HOOK IS NOT SUPPLIED



STEP 2

Remove excess chain to determine full drop.



STEP 3

Use shackle to hook the stem to the chain.



STEP 4

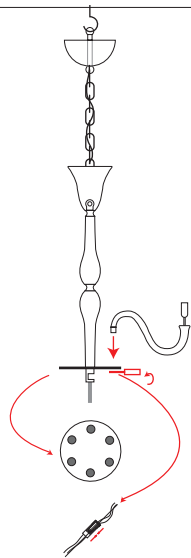
Thread cable up through the length of the stem, thread it through the chain and post up through the tube into the ceiling canopy. Make electrical connection.

DIEGO CHANDELIER

INSTALLATION INSTRUCTIONS

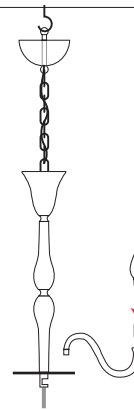
3 OF 3

BARONCELLI 



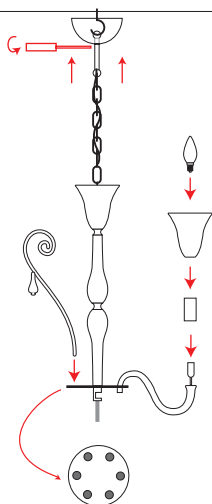
STEP 5

Install the arms into their corresponding sockets within the fondino plate. Secure into the socket below the plate and make electricals using 'click' connectors.



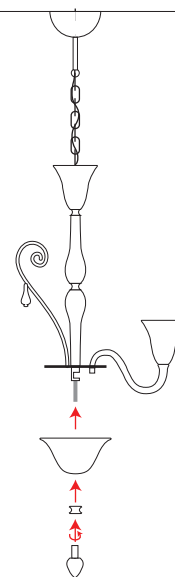
STEP 6

Install bulbs before testing electrics.



STEP 7

Raise ceiling canopy and secure in position. Install cup, candle sleeve and bulb onto each arm. Insert glass elements.



STEP 8

Raise fondino and metal liner into position and secure using finial beneath.