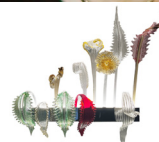


INNOVO  
WALL LIGHT

BARONCELLI



**IMAGE SHOWS**

Multi coloured glass and polished  
chrome





## MATERIALS

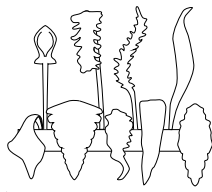
### GLASS

Multicoloured cast glass as shown

### METAL FINISHES

Polished chrome

## SIZES



500mm / 19"

## DETAILS

**These wall lights are made with found vintage glass elements and therefore each piece is unique.**

## ELECTRICALS

### LAMP

240V/120V

Warm white LED tape (2600K)

= 400Lm

### POWER

24V LED tape with power output of:

= 5W

Supplied with 24V constant voltage mains dimmable transformers. Trailing edge dimming is recommended for best results. Transformers are housed within wall mounting.

Full transformer specification available upon request.

1-10v and DALI dimming options are available by request, requires an additional cable circuit to be provided, please consult your electrician for suitability.

### STANDARD

All lighting is made to CE standards.

LED tape and transformer UL recognised.

## CONTACT US

### PRODUCTION AND LOGISTICS

Via Dei Ronchi 19

Padova 35127

### SALES OFFICES

London +44 (20) 7720 6556

New York +1 212 255 2005

studio@baroncelli.com